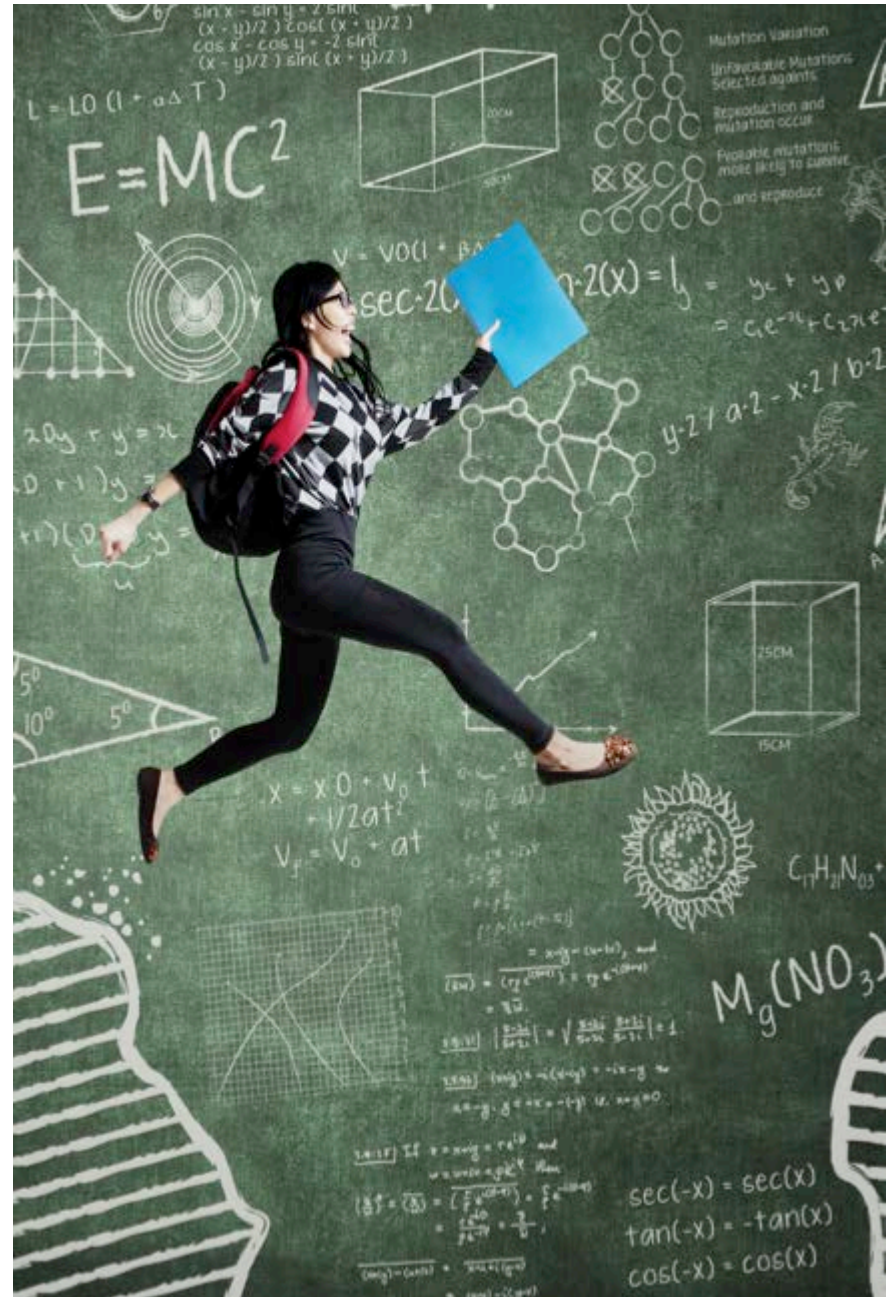


Get ready for Semester Get ready in Canvas

Welcome to Canvas – our online learning space

All* BCA online unit sites are accessed through The University of Sydney Learning Management System (LMS). The BCA online facilities, however, are independent of the policies and procedures of Sydney and apply equally to all BCA consortium universities.

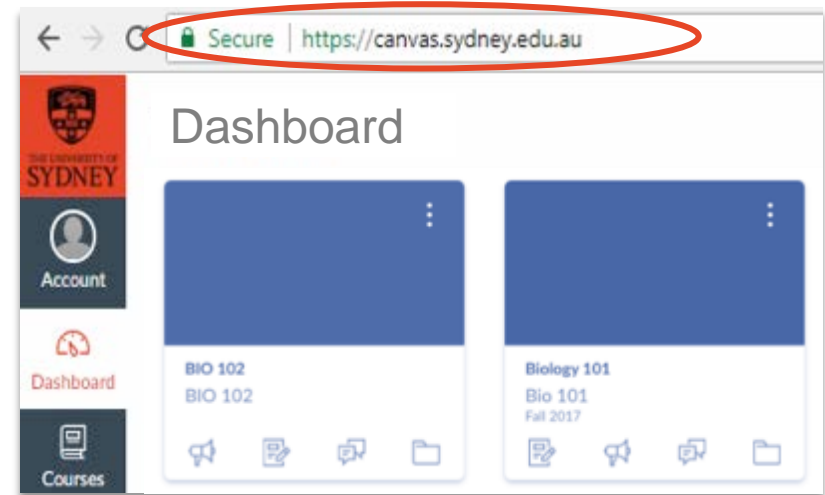
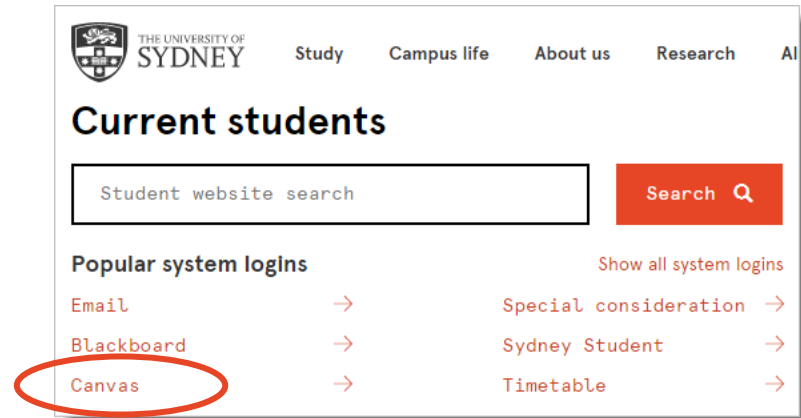
*Except Epidemiology which is delivered on the LMS of the delivering university.



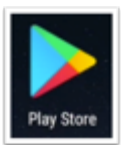
Welcome to Canvas

In semester 2, 2018 the BCA is moving from Blackboard to Canvas.

- Access Canvas at canvas.sydney.edu.au (or **Current students on the Sydney website**).
- Login with your Username (Unikey) and password.
- Note, a Canvas Student app is available, but it has limited functionality. We recommend using the computer/tablet based interface.

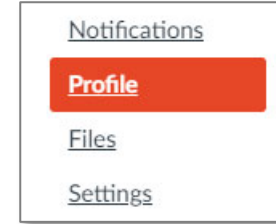


Canvas Student
By Instructure Inc.

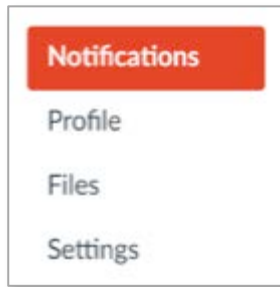




set up your Profile...



...and Notifications



Notification Preferences

✓ Notify me right away ☹ Send daily summary 📧 Send weekly summary ✕ Do not send me anything

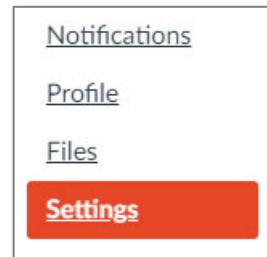
Course Activities	Email Address	Mobile Number
	student@uni.sydney.ed.au	+61 123 456 789
Due Date	✓ ☹ 📧 ✕	✓ ✕
Grading Policies	✓ ☹ 📧 ✕	✓ ✕
Course Content	✓ ☹ 📧 ✕	✓ ✕
Announcement	✓ ☹ 📧 ✕	✓ ✕

Set up your **Notifications** appropriately to receive important announcements and alerts.

Do NOT completely turn off your notifications! You may receive assessment and other important information through this channel.

...and Settings

Note: Announcements and alerts will be sent to the email listed in Settings. If this is incorrect, you can add an address (and if you wish, other device contacts) and tick this in **Notifications**.



Ways to Contact

Email Addresses

student@uni.sydney.ed.au

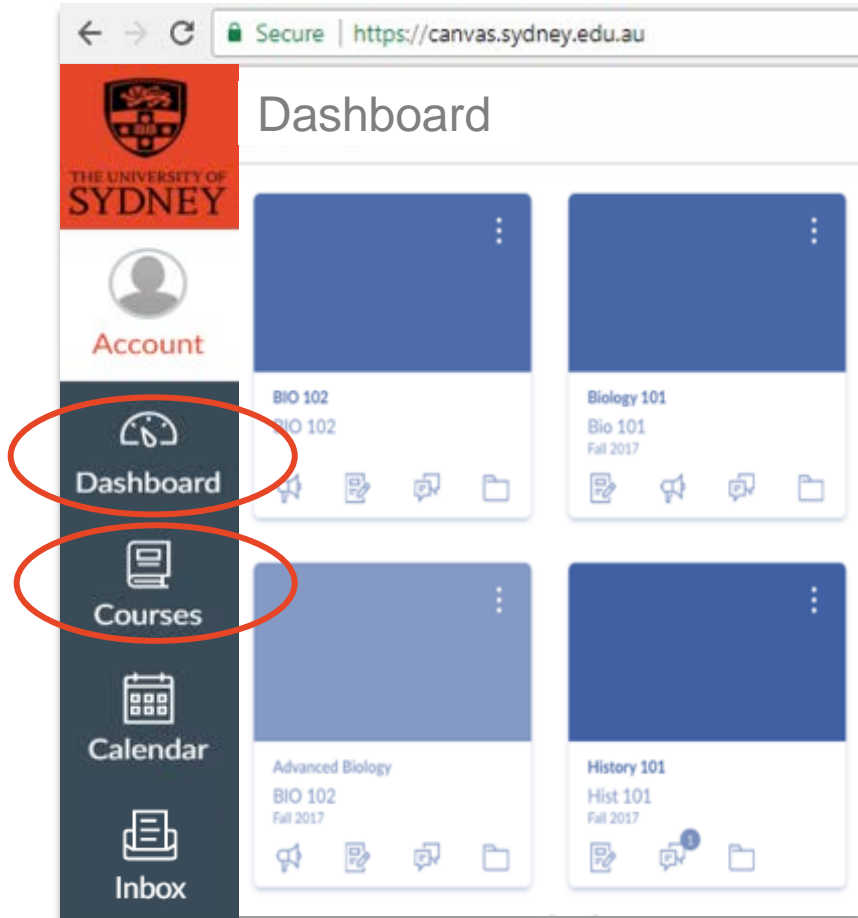
+ Email Address

Other Contacts Type

+ 61 123 456 789 sms 🗑

+ Contact Method

Find your units



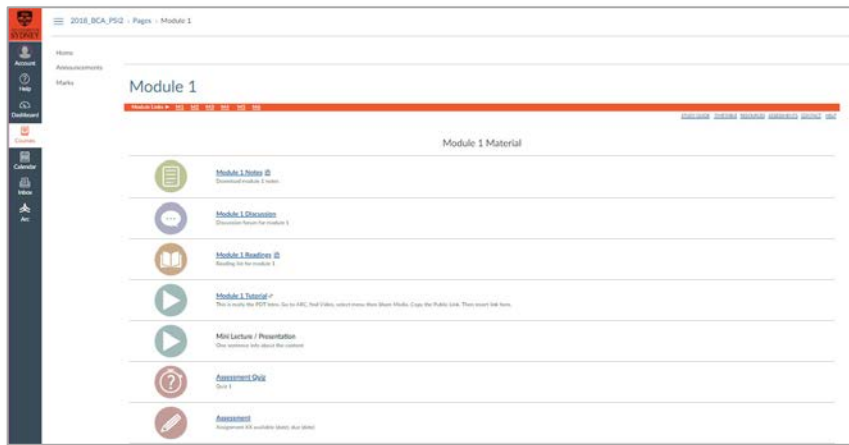
- All BCA units you are currently enrolled in can be found in your **Dashboard** (with the exception of EPI, which will be delivered using the LMS of the delivering university).
- A BCA Unit (of study) is called call a **“Course”** in Canvas (and, at BCA universities, a unit, course, subject or paper).

Access your unit of study content



- View **Announcements** from your unit coordinator and other teachers.
- View your grades and feedback under **Marks**.
- Unit content is organised under **Modules** → **M1, M2 etc:**
 - access study notes, video presentations, etc...
 - download and submit from **Assessment**
 - contribute to **Discussions** with your peers and unit coordinators.

Navigation

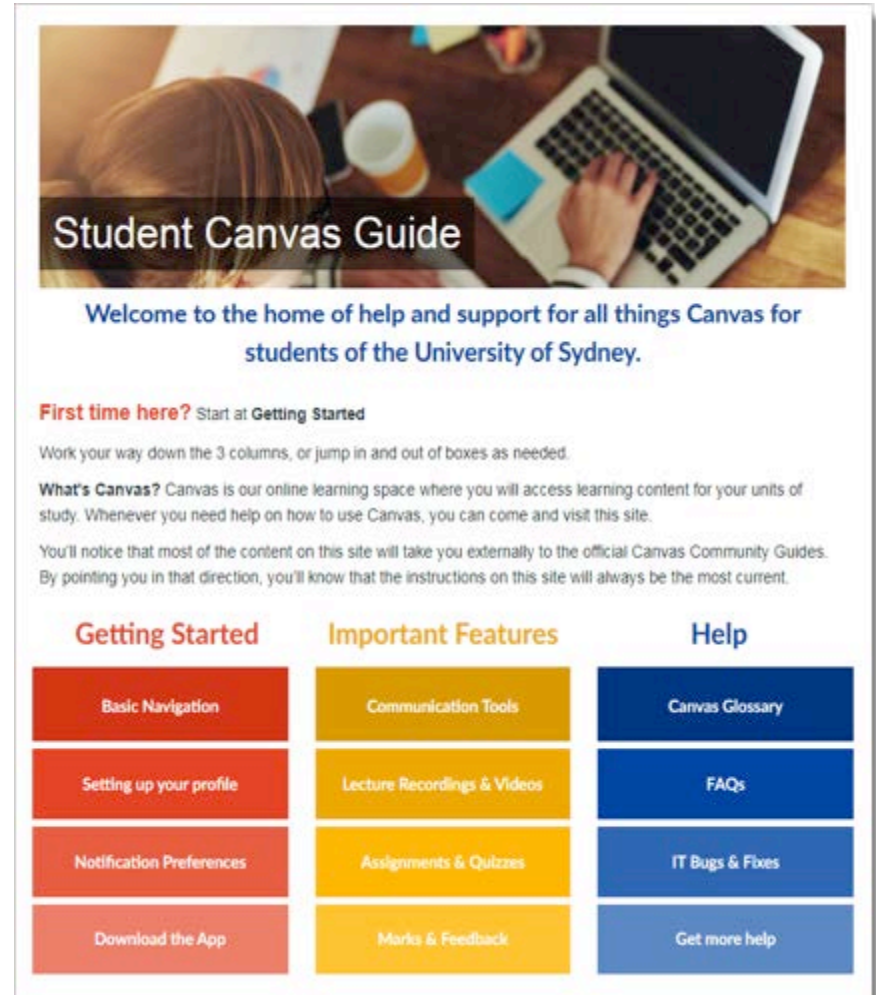


- The **pages** within the unit site open in the same window.
- If you go to a page that doesn't have the orange bar at the top (eg a video page), click on the back button of your browser, or the **Home** link in the site.
- Links to sites outside of Canvas (eg BCA Student Resources) will open in a new page or tab.

Visit the Student Canvas Guide

When you are ready to get started, head to the [Student Canvas Guide](#). (Link also available under “Help” on the top RHS of each page, or in the Canvas menu on the far RHS.)

- Learn more about how to **navigate Canvas**
- Get answers to **FAQs** from other students
- Find information on tools such as **Arc** (videos) and **Turnitin** (assignment submission)
- Access solutions to common **IT issues**



The screenshot shows the 'Student Canvas Guide' homepage. At the top, there is a header image of a person working on a laptop with the text 'Student Canvas Guide' overlaid. Below the header, a welcome message reads: 'Welcome to the home of help and support for all things Canvas for students of the University of Sydney.' The page is organized into three columns: 'Getting Started', 'Important Features', and 'Help'. Each column contains a list of links to various resources.

Getting Started	Important Features	Help
Basic Navigation	Communication Tools	Canvas Glossary
Setting up your profile	Lecture Recordings & Videos	FAQs
Notification Preferences	Assignments & Quizzes	IT Bugs & Fixes
Download the App	Marks & Feedback	Get more help

Still have questions?

For **unit-specific help**

(e.g. questions about learning resources, assessment, issues with study):

- Talk to your **unit coordinator**.
- Staff at the **BCA Coordinating Office** can point you in the right direction.
- See **BCA Student Resources** (in the **Help link**) for useful course information and study aides.

For **IT help**

(e.g. issues using Canvas; login problems):

- Visit the **Student Canvas Guide** .
- **Live Chat** with Canvas Support under the “Help” menu in your Canvas site.
- **Call** the IT Helpdesk
9351 2000
(*option 2 then option 3*). Note: Tell them if you are an external (non-Sydney) student.

